

FUJI MATS

Wall Pad Installation: Concrete / Block Walls

Tools
Needed:



Wood Bit

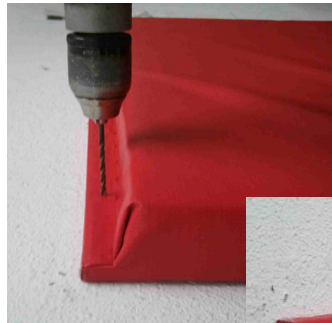


Concrete Bit



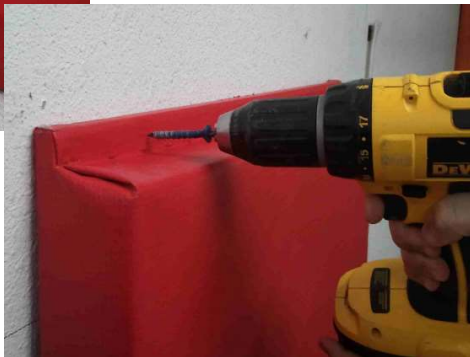
Lay Your Wall Pads In Place

(typically, your wall pad lip should sit to the floor, so put wall pads in before your FUJI Mats)



Pilot Your Holes in the Pad Lip

(use a wood bit, and drill into a scrap piece)
2 Holes for each top and bottom lip will do.



Install and ensure your pads are level.

Pilot your wall with the pad in place, then sink in your concrete screws to secure the pad.

(Tip: spray paint the heads of the screws before to match your wall pad color)

